

Tangent

ANDOVER FABRICS



Side by Side Quilt designed by: **Janet Houts**
Quilt Size: **60" x 84"** • Skill Level: **Intermediate**

Side by Side

Introducing Andover Fabrics new collection: **TANGENT** by Andover Fabrics

Quilt designed by Janet Houts

Quilt finishes 60" x 84"

It is all angles in this up-to-the-minute twin-size quilt. The blocks are easier to make than you might think—strips are added around a center triangle and trimmed to size. Part of the fun is choosing fabric combinations of your own liking.

Cutting Directions

Note: Read assembly directions before cutting patches. All measurements are cut sizes and include ¼" seam allowances. WOF designates the width of fabric from selvedge to selvedge (approximately 42" wide).

Read Step 1 before cutting fabrics.

Note: Number of patches to cut from each fabric is optional

Cutting for 1 Triangle Block:

- (1) Template 1
- (1) framing strip 1½" x 15"
- (1) strip 1½" x 14"
- (1) strip 1½" x 13"

Cutting for 1 Half Triangle Block or 1 Half Triangle Block Reversed

- (1) Template 2 or (1) Template 2 reversed
- (1) strip 1½" x 15"
- (1) strip 1½" x 7"

Cutting for entire quilt:

- 22 Prints
- Cut (72) Template 1 patches (3-4 from each print)
- Cut (8) Template 2
- Cut (8) Template 2 Reversed
- Cut framing strips for approx. 26 blocks
- Cut framing strips for approx. 7 half blocks

6 Solids

- Cut framing strips for approx. 46 blocks (7-8 from each print)
- Cut framing strips for approx. 9 half blocks

Binding

- Cut (8) strips 2½" x WOF for binding

Backing

- Cut (2) lengths 35" x 94", pieced to fit quilt top with overlap on all sides

Fabric Requirements

		Yardage		Fabric
22 Prints	blocks	¾ yard each		
	772-C	772-K	772-L	773-C
	773-K	773-L	774-C	774-E
	774-K	775-C	775-E	775-K
	776-C	776-K	776-L	777-C
	777-E	777-K	778-C	778-K
	778-L	779-E		
	6 Solids	blocks	¾ yard each	
CS-10-Cloud		CS-10-Cream		
CS-10-Ivory		CS-10-Slipper		
CS-10-Snow		CS-10-Truffle		
Binding		⅝ yard		779-K
Backing		5¼ yards		779-C

Making the Quilt

1. Most of the "framing" strips are made with the solid fabrics, but some blocks have print fabric frames. Yardage is sufficient to combine fabrics in any way you desire. You can cut all the patches before you begin sewing, or choose fabric combinations as you go.

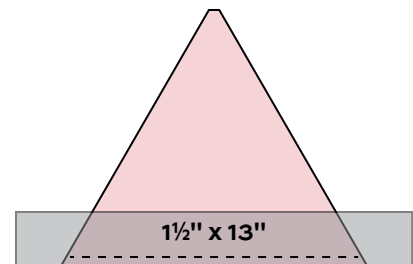


Diagram 1

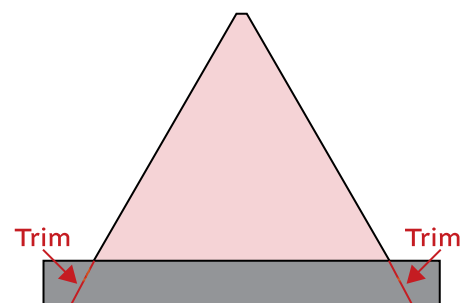


Diagram 2

Side by Side Quilt

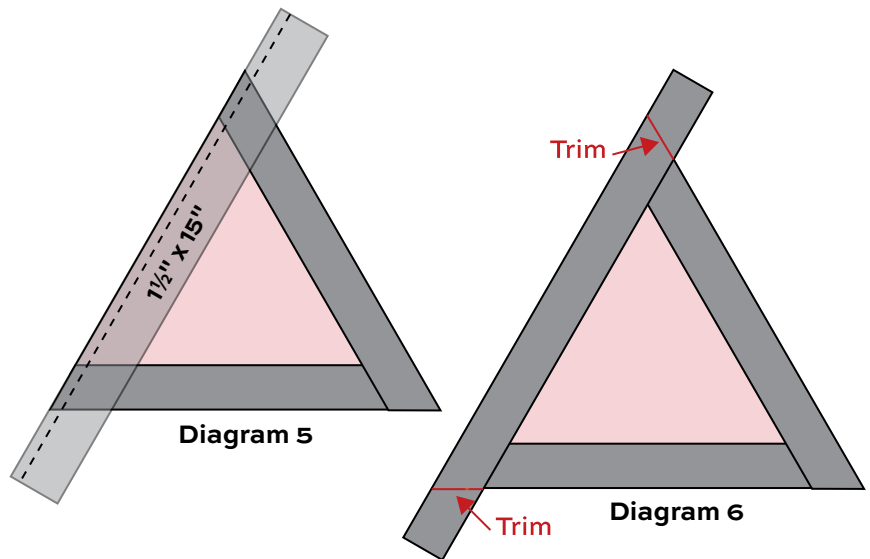
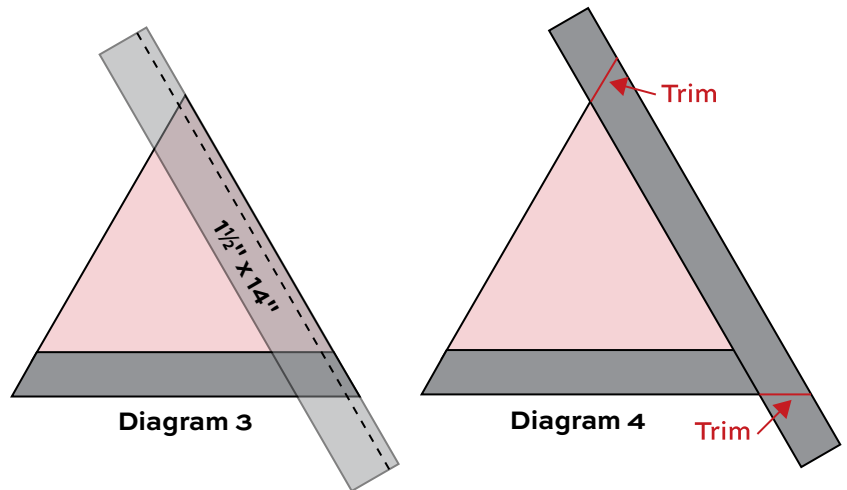
2. Refer to the block diagrams for these steps. Align a 13" strip on the bottom of a Template 1 triangle patch. Stitch along the edge (Diagram 1). Press the strip away from the center. Trim the ends even with the sides of the triangle (Diagram 2).

3. Stitch a 14" strip of the same fabric used in Step 1 to the side of the triangle. Press the strip away from the center. Trim strip even with the top point and bottom corner (Diagrams 3 and 4).

4. Stitch a 15" strip to the opposite side of the triangle; press and trim (Diagrams 5 and 6). Repeat these steps to make 72 Triangle Blocks.

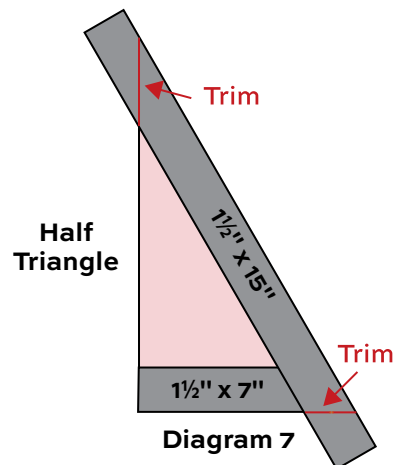
5. Refer to Diagram 7 to add strips to 8 Half Triangle Blocks and 8 Reversed Half Triangle Blocks. Again, press and trim the strips even with the larger patch.

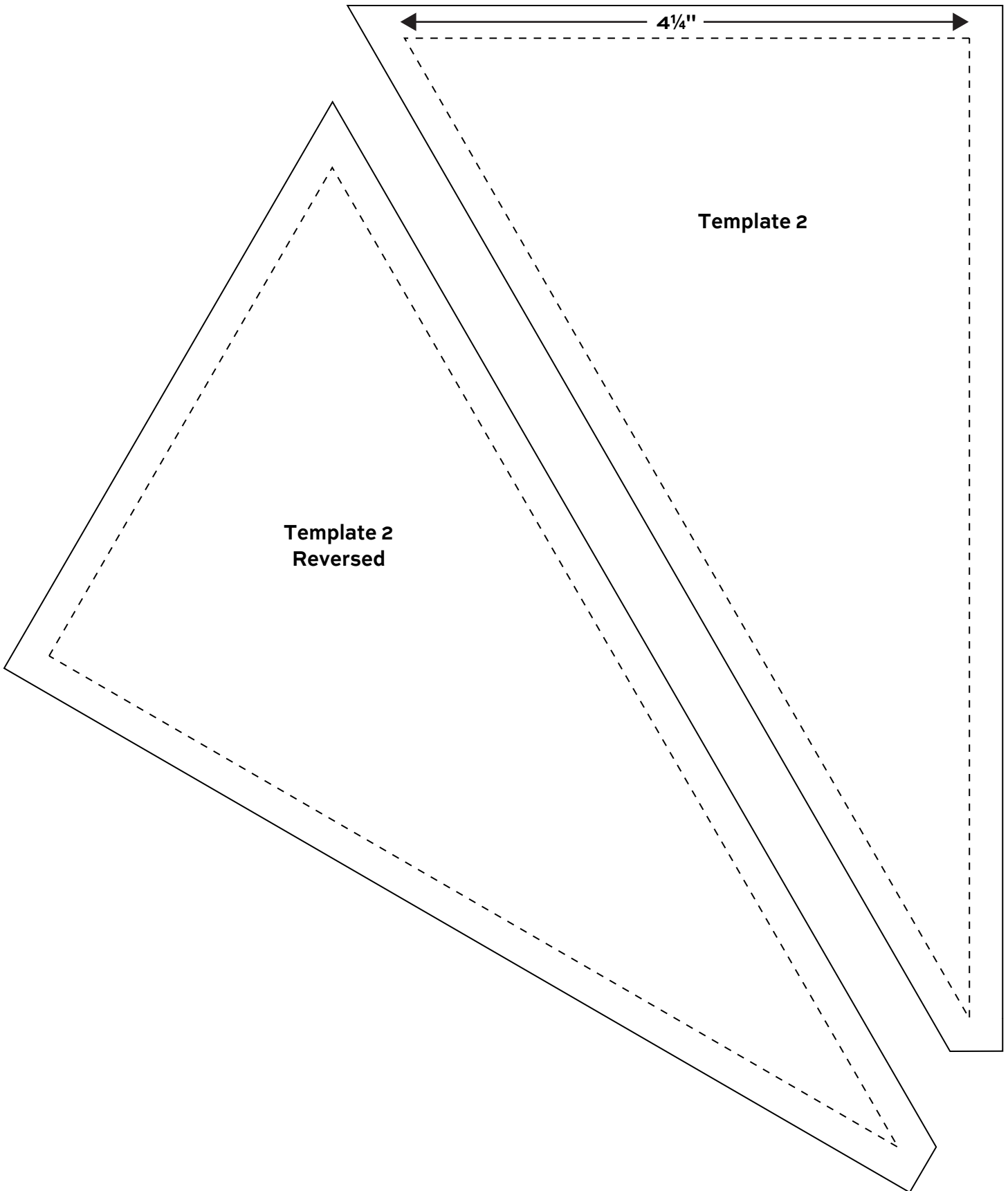
6. Note that all 8 rows have blocks arranged in the same orientation. Every other row is turned upside down when rows are joined to make the quilt. Arrange 9 Triangle Blocks to make a row. Position a Half Triangle Block and a Reversed Block at the ends. To make sure that the blocks go together properly, mark dots at all block corners that are $\frac{1}{4}$ " from the sides of the block. Align the dots when joining block to block. Join the blocks and half blocks into 8 rows. Finally, join the rows.



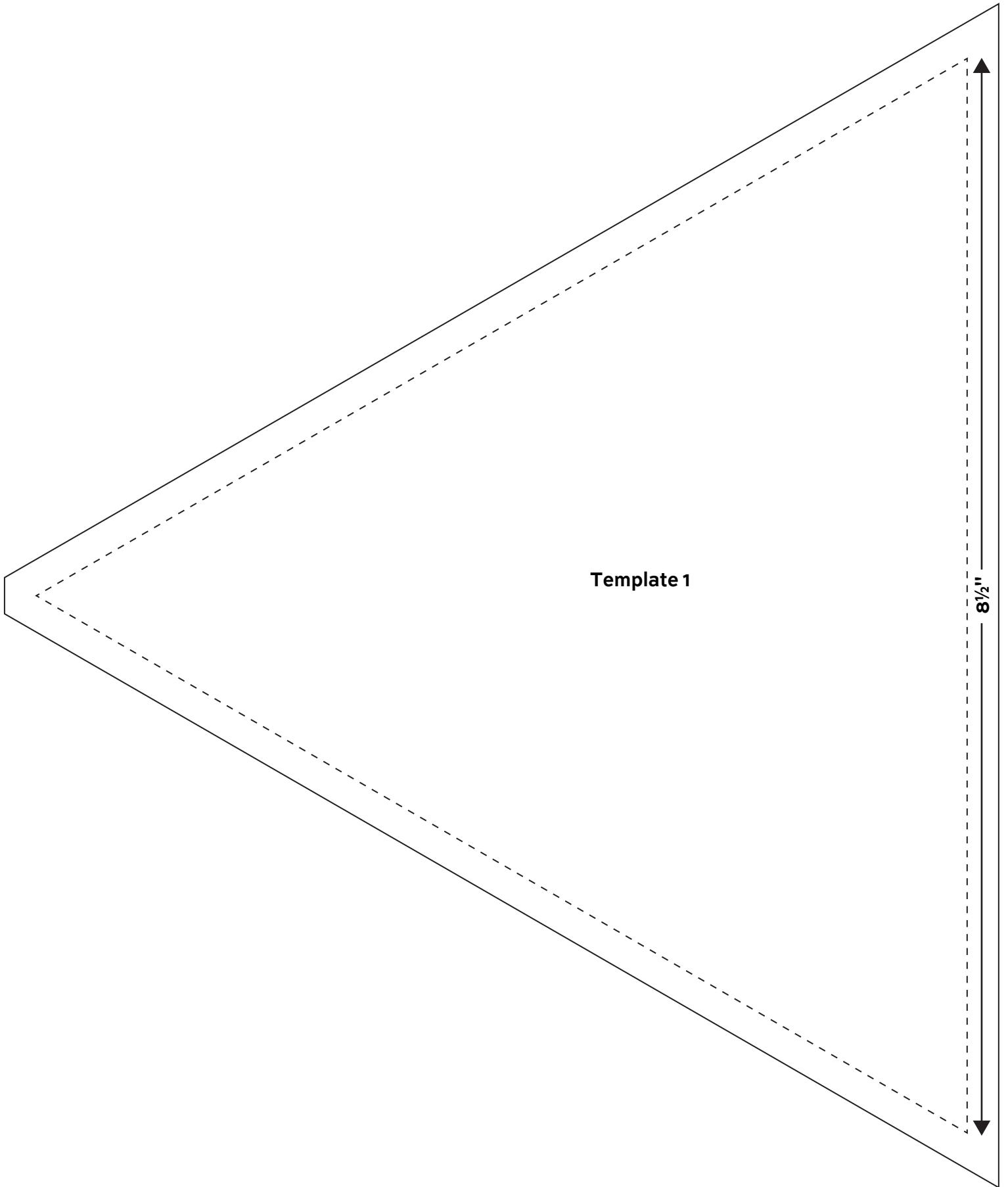
Finishing the Quilt

7. Layer the quilt with batting and backing and baste. Quilt in the ditch around patches. Quilt around the printed motifs in the center triangles. Or, quilt an overall design. Bind to finish the quilt.





Side by Side Quilt



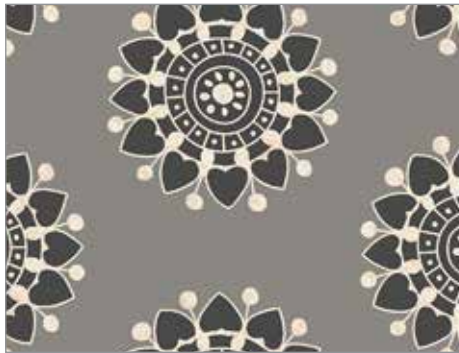
Side by Side Quilt



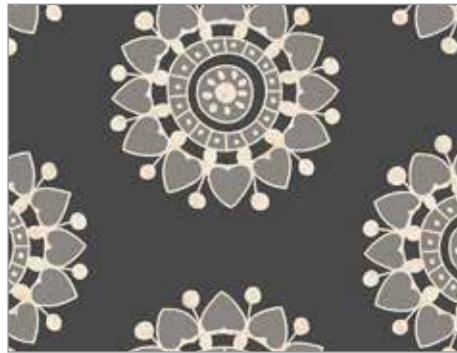
Quilt Assembly

Tangent

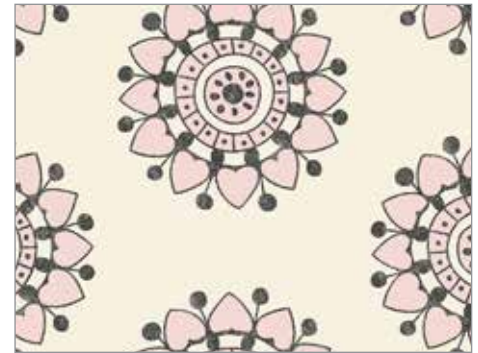
ANDOVER FABRICS



772-C



772-K



772-L



773-C



773-K



773-L



774-C



774-E



774-K



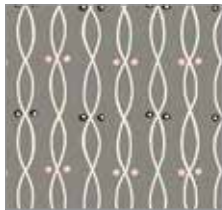
775-C



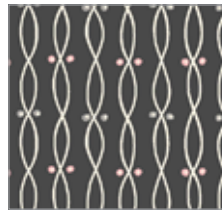
775-E



775-K



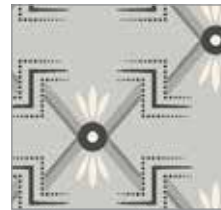
776-C



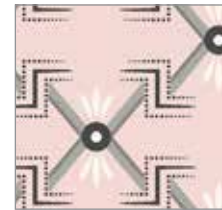
776-K



776-L



777-C



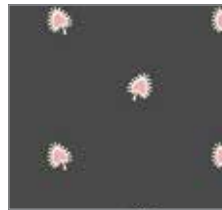
777-E



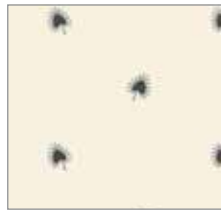
777-K



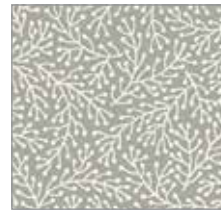
778-C



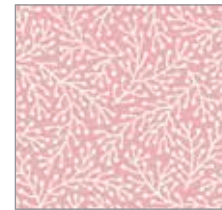
778-K



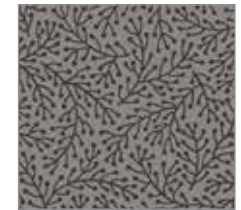
778-L



779-C



779-E

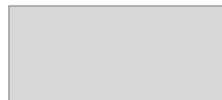


779-K

Additional fabric from **Century Solids** by Andover Fabrics



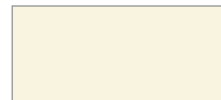
CS-10-Truffle



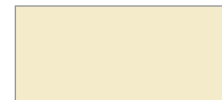
CS-10-Cloud



CS-10-Snow



CS-10-Cream



CS-10-Ivory



CS-10-Slipper

All fabrics are used in quilt pattern. Fabrics shown are 50% of actual size.